

ODM Quality Report

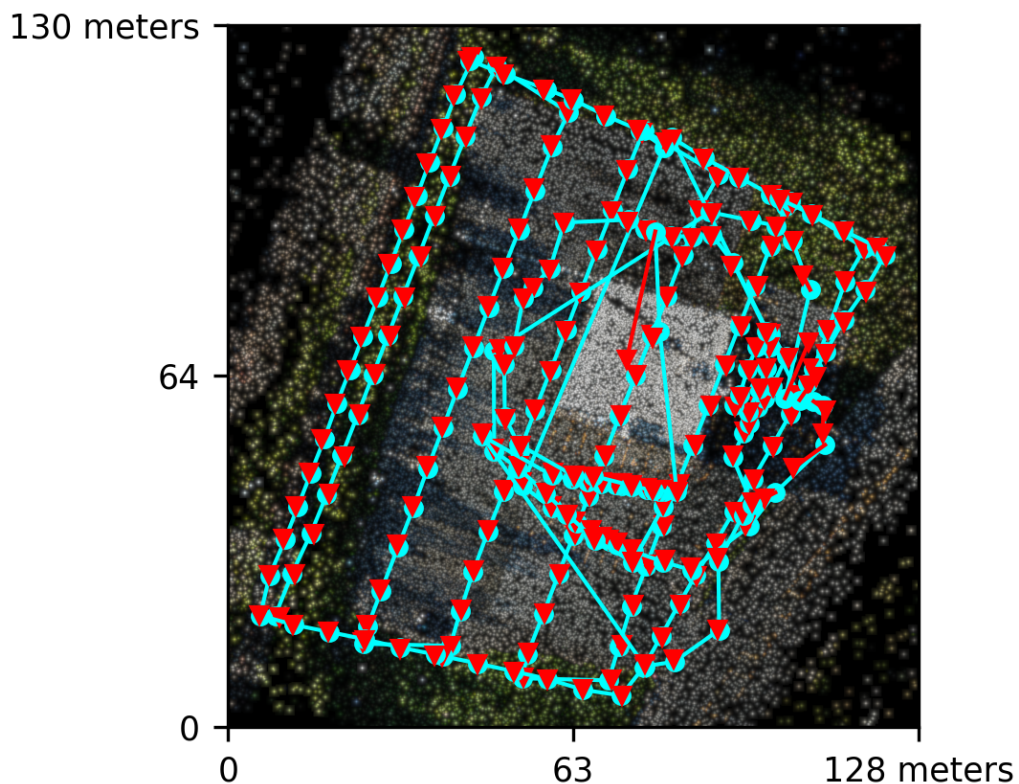
Processed with ODM version 3.5.6

Dataset Summary

Date	04/07/2026 at 19:18:22
Area Covered	0.013666 km ²
Processing Time	14.0m:55.0s
Capture Start	17/06/2026 at 19:34:51
Capture End	17/06/2026 at 19:47:06

Processing Summary

Reconstructed Images	221 over 235 shots (94.0%)
Reconstructed Points (Sparse)	166379 over 186963 points (89.0%)
Reconstructed Points (Dense)	20,271,347 points
Average Ground Sampling Distance (GSD)	1.0 cm
Detected Features	7,758 features
Reconstructed Features	4,043 features
Geographic Reference	GPS
GPS errors	0.93 meters

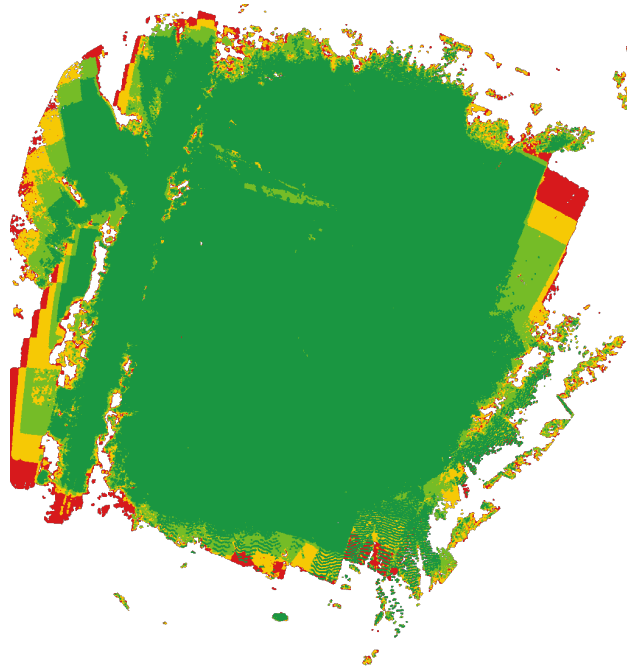


Previews



Orthophoto

Survey Data



■ 2 ■ 3 ■ 4 ■ 5+

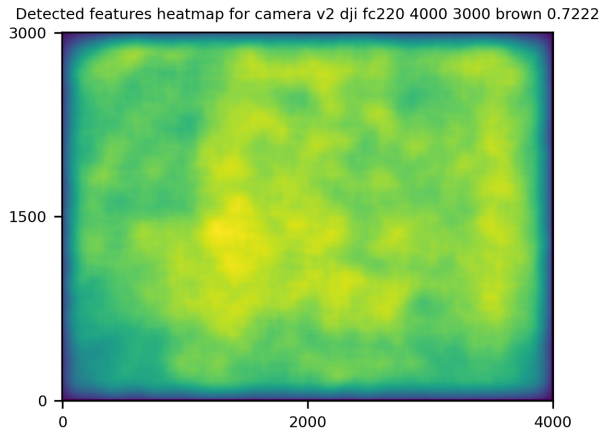
GPS/GCP/3D Errors Details

GPS	Mean	Standard Deviation	RMS Error
X Error (meters)	0.006	0.731	0.731
Y Error (meters)	-0.020	1.855	1.855
Z Error (meters)	-0.020	0.740	0.740
Total			0.930

3D	Mean	Standard Deviation	RMS Error
X Error (meters)	0.036	0.115	0.120
Y Error (meters)	0.042	0.143	0.149
Z Error (meters)	0.074	0.211	0.223
Total			0.109

	Absolute	Relative
Horizontal Accuracy CE90 (meters)	0.591	0.100
Vertical Accuracy LE90 (meters)	1.069	0.158

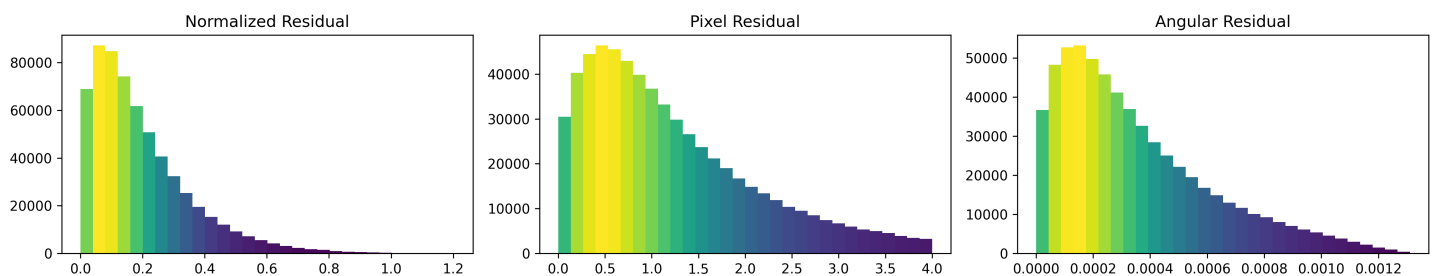
Features Details



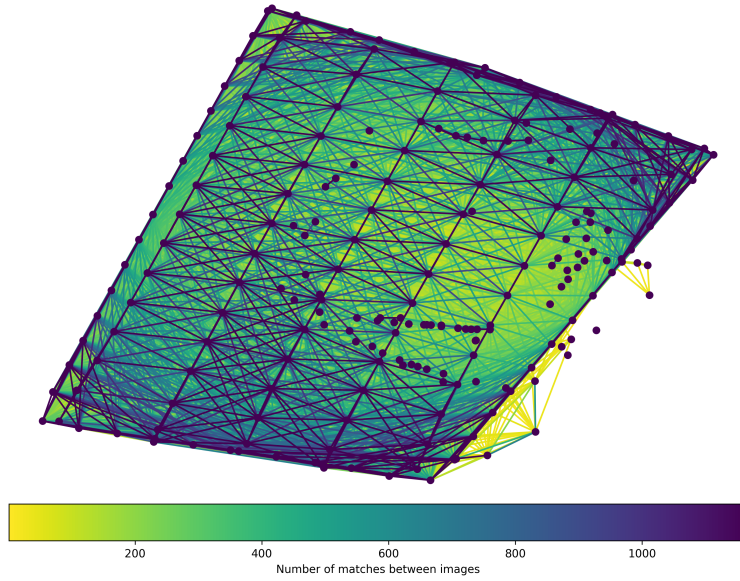
	Min.	Max.	Mean	Median
Detected	3843	9850	7244	7758
Reconstructed	20	6390	3058	4043

Reconstruction Details

Average Reprojection Error (normalized / pixels / angular)	0.20 / 1.21 / 0.00035
Average Track Length	4.06 images
Average Track Length (> 2)	5.95 images



Tracks Details



Length	2	3	4	5	6	7	8	9	10
Count	79365	30817	16558	10611	6519	4705	3495	2662	2284

Camera Models Details

v2 dji fc220 4000 3000 brown 0.7222

	k1	k2	k3	p1	p2	focal	aspect_ratio	cx	cy
Initial	0.0000	0.0000	0.0000	0.0000	0.0000	0.7222	1.0000	0.0000	0.0000
Optimized	0.0342	-0.0735	0.0621	-0.0005	0.0001	0.7611	1.0000	-0.0143	0.0016

