

ODM Quality Report

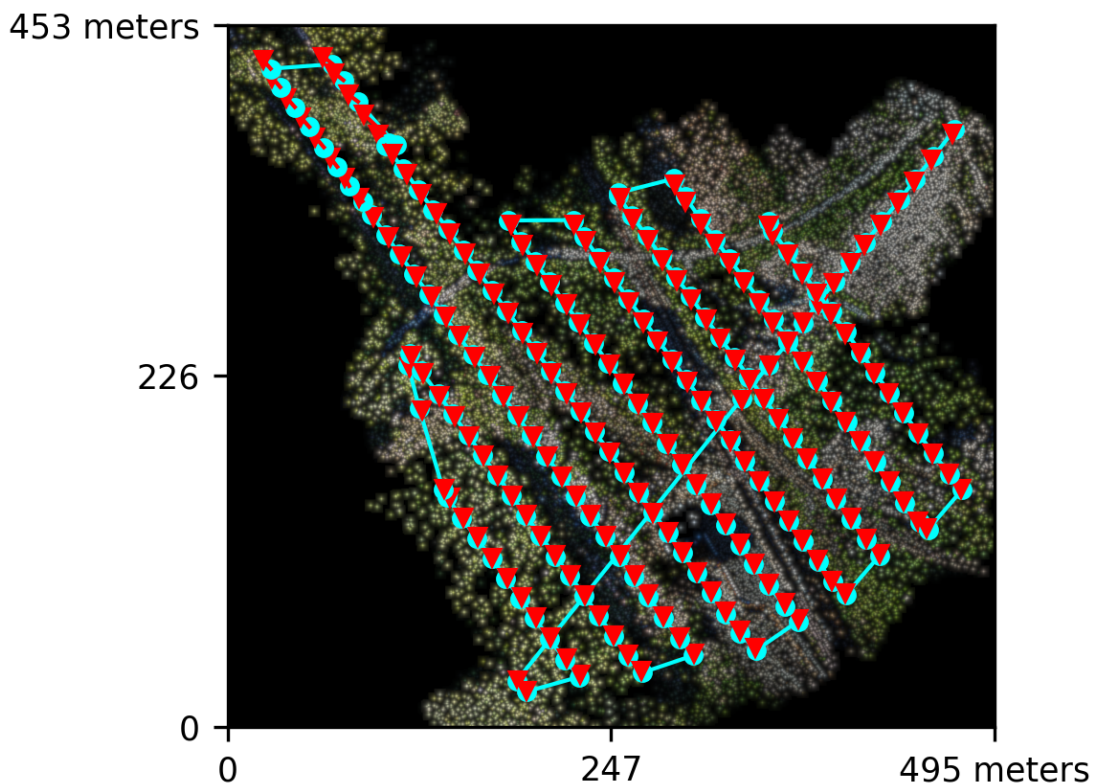
Processed with ODM version 3.5.6

Dataset Summary

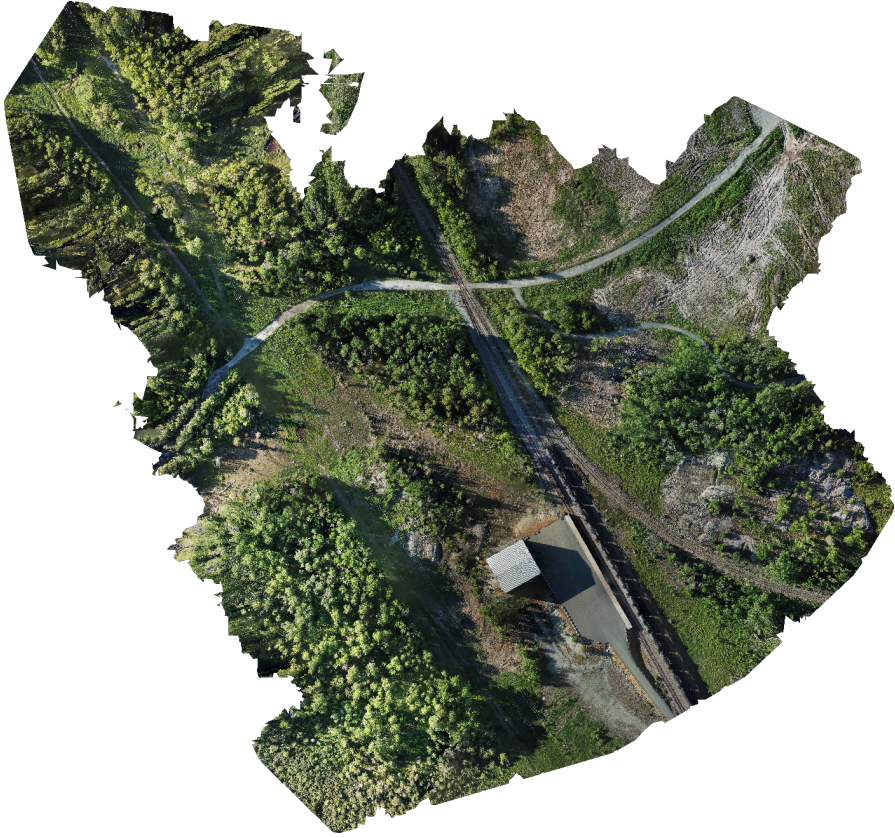
Date	21/06/2026 at 23:58:40
Area Covered	0.180931 km ²
Processing Time	43.0m:24.0s
Capture Start	21/06/2026 at 18:54:19
Capture End	21/06/2026 at 19:03:55

Processing Summary

Reconstructed Images	202 over 202 shots (100.0%)
Reconstructed Points (Sparse)	64654 over 66942 points (96.6%)
Reconstructed Points (Dense)	28,003,238 points
Average Ground Sampling Distance (GSD)	2.5 cm
Detected Features	2,907 features
Reconstructed Features	1,272 features
Geographic Reference	GPS
GPS errors	2.40 meters

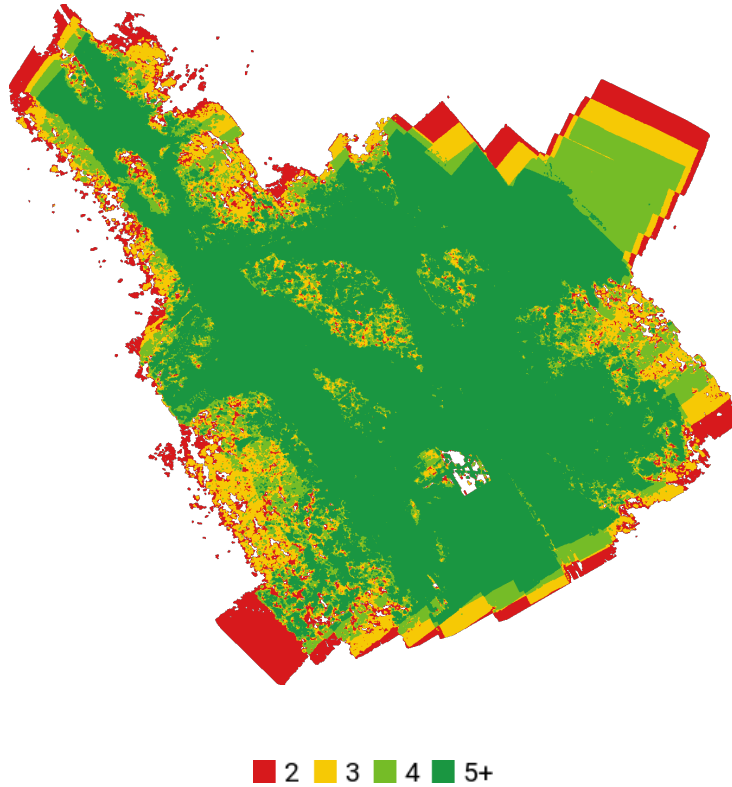


Previews



Orthophoto

Survey Data



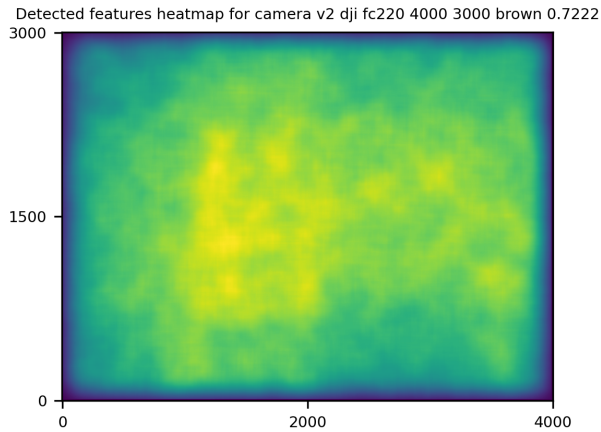
GPS/GCP/3D Errors Details

GPS	Mean	Standard Deviation	RMS Error
X Error (meters)	0.013	2.161	2.161
Y Error (meters)	-0.006	2.332	2.332
Z Error (meters)	-0.002	1.860	1.860
Total			2.404

3D	Mean	Standard Deviation	RMS Error
X Error (meters)	0.070	0.216	0.227
Y Error (meters)	0.060	0.135	0.148
Z Error (meters)	0.201	0.518	0.556
Total			0.234

	Absolute	Relative
Horizontal Accuracy CE90 (meters)	2.952	0.184
Vertical Accuracy LE90 (meters)	2.350	0.398

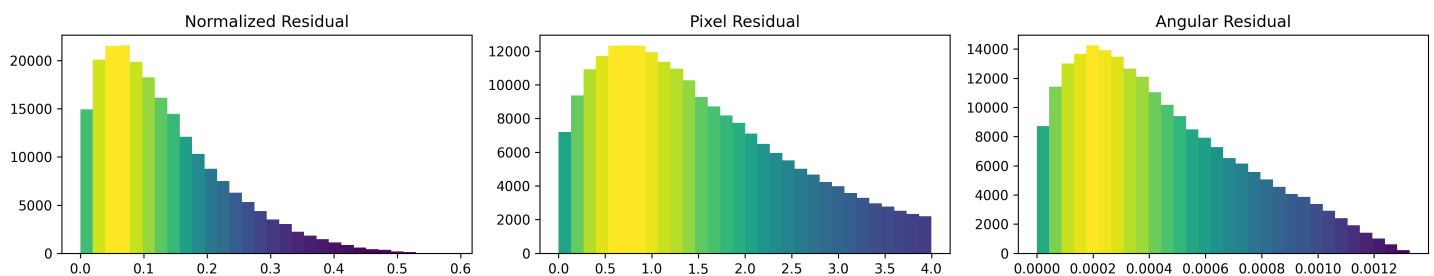
Features Details



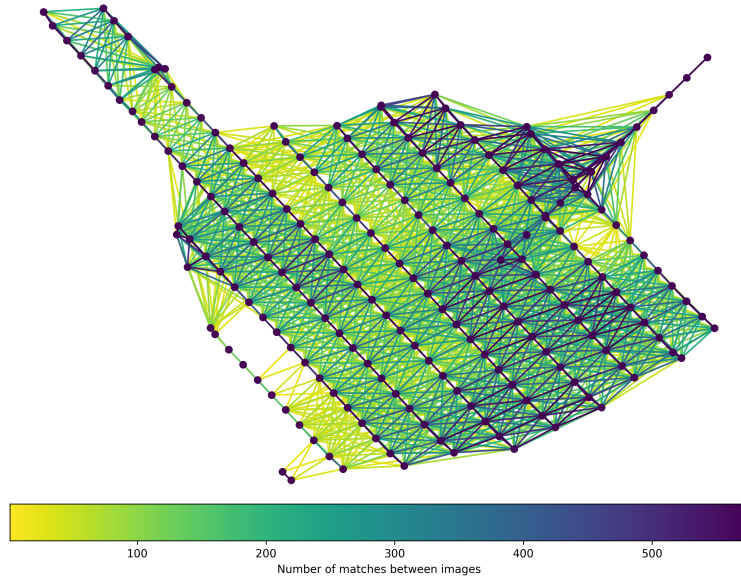
	Min.	Max.	Mean	Median
Detected	2299	3426	2870	2907
Reconstructed	241	2315	1256	1272

Reconstruction Details

Average Reprojection Error (normalized / pixels / angular)	0.13 / 1.50 / 0.00044
Average Track Length	3.92 images
Average Track Length (> 2)	5.54 images



Tracks Details



Length	2	3	4	5	6	7	8	9	10
Count	29490	11522	7001	4021	2693	2174	1819	1563	1232

Camera Models Details

v2 dji fc220 4000 3000 brown 0.7222

	k1	k2	k3	p1	p2	focal	aspect_ratio	cx	cy
Initial	0.0000	0.0000	0.0000	0.0000	0.0000	0.7222	1.0000	0.0000	0.0000
Optimized	0.0262	-0.0509	0.0403	-0.0001	-0.0002	0.7509	1.0000	-0.0164	0.0018

